



# PELSUE®

# Product Specifications

## Model: PNUS101 & PNUS101-SS (Stainless Steel) Wall-Mounted Sleeve

The Pelsue Models #PNUS101 & #PNUS101-SS Wall Sleeves are designed to be installed on an existing vertical surface. The mounting surface must be substantial enough in order to withstand the proofing loads reported within this document. The PNUS101 & PNUS101-SS Wall Sleeve can be bolted or welded to a steel surface or fastened to a concrete surface with appropriate concrete fasteners. When installed, each of the sleeves provides a fixed receiver for any PELSUE Brand offset arm or davit system. The -SS or Stainless Steel version of the sleeve provides additional durability in a corrosive environment.

### General Specifications:

#### Product is Designed & tested to be used in 2 General Applications:

1. As a mounting point for an offset davit system to be utilized as a personnel or equipment lowering, lifting, and positioning device.  
**Man Rated Load Capacity.....350 LBS. (159 KG.)** Maximum at up to a 48" offset
2. As a mounting point for an offset davit system to be utilized as an anchorage for a personal fall arrest system.

**Compliance.....**Designed & Tested as a Fall Arrest Anchorage when used in conjunction with a Pelsue Offset Davit System as per OSHA 1910.66 & ANSI Z359 for one person of 350 LBS. (159 KG.) maximum weight inclusive of all tools and equipment.  
**\*\*Warning!** A 900 LB. maximum arrest force fall arrest device must be used when this product is employed as part of a complete fall arrest system.

### Materials & Construction:

**General Construction.....**Welded Carbon Steel (PNUS101) or Welded Stainless Steel (PNUS101-SS)

#### **Anti-Friction Components:**

- Grey PVC Slip Plate & ABS Plastic Friction Sleeve

### Weight:

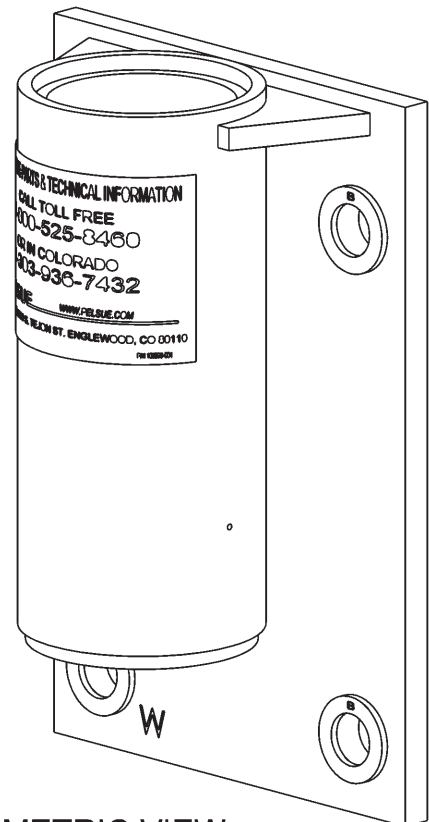
**Weight.....**22 LBS.

### Mounting Requirements:

**Metal Structure:** *Secure with 3/4"UNC SAE Grade 5 (ASTM A325) or better threaded fasteners and included 3/4" Hardened flat washers. Ensure that supporting structure will withstand tensile working loads in each bolt of 4100 Lb. (18.3 kN) and shear working loads in each bolt of 3200 Lb. (14.3 kN) with at least a 2:1 Factor of Safety.*

**Concrete:** *Install Using concrete wedge-type anchors with reported tensile & shear working strengths of at least 4100 Lb. (18.3 kN) and 3200 Lb. (14.3 kN) respectively with at least a 4:1 Factor of Safety. Concrete Strength & thickness must be sufficient in order to meet or exceed the fastener manufacturer's guidelines. \*\*Contact Pelsue for additional assistance.*

**\*\*NOTE -** Above Requirements are guidelines for safe-installation. Consult the Proof Load Table in this document & have concrete & installation of system approved by installing engineer.



DIMETRIC VIEW



**T.A. Pelsue Company**

2500 S. Tejon St.

Englewood, CO 80110

Ph: 1-800-525-8460, (303) 936-7432

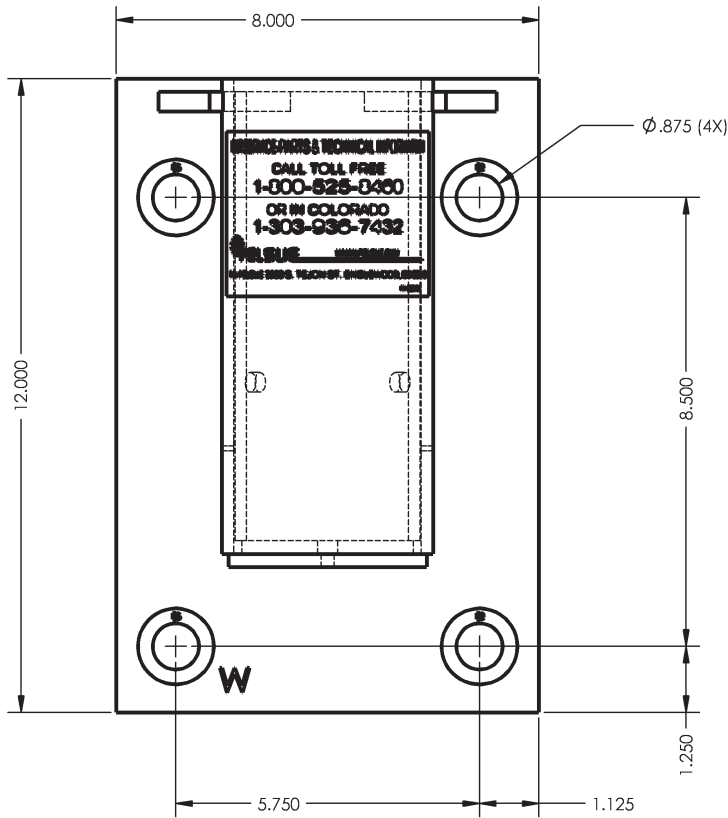
Fax: (303)934-5581

Web: www.pelsue.com E-mail: sales@pelsue.com

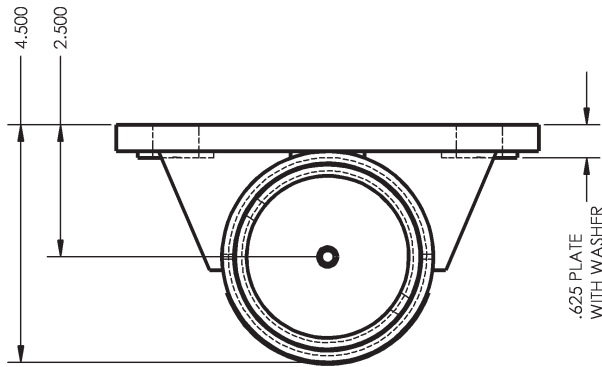


# PELSUE®

# Product Specifications

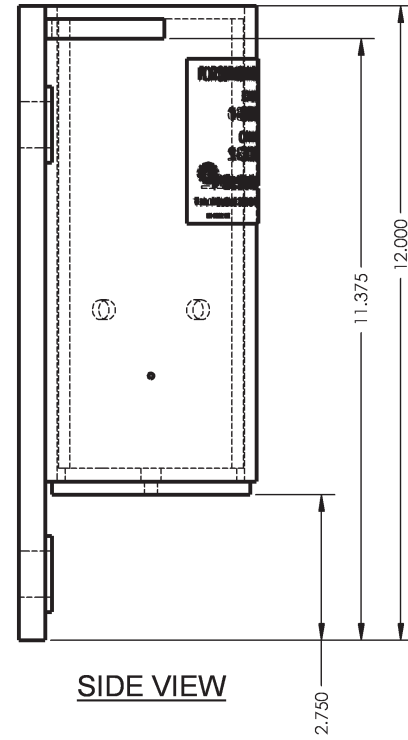


FRONT VIEW



TOP VIEW

\*\* ALL DIMENSIONS IN INCHES UNLESS \*\*  
\*\* OTHERWISE STATED \*\*



SIDE VIEW

### PNUS Series Permanent Sleeve Systems - Proof Load Tabulation

Product	Accompanying System	Product Offsets	Proof Load* Attained at Maximum Offset	Torsional Proof Load About Sleeve Center	Fall Arrest Anchorage Compliance** at Maximum Offset	Personnel Hoist & Retrieval Ratings** at Maximum Offset
PNUS Series Permanent Sleeve Systems	PNUH1824	18" & 24"	5000 LB.	10000 Ft.-Lb.	ANSI Z359 (1 person) ANSI A10.14 (1 person) OSHA 1910.66 (1 person)	1 Person (350 LBS. / 159 KG Maximum Weight) with better than a 14:1 Factor of Safety
	PNUH3066	30" & 36"	3600 LB.	10800 Ft.-Lb.	ANSI A10.14 (1 person) OSHA 1910.66 (1 person)	1 Person (350 LBS. / 159 KG Maximum Weight) with better than a 10:1 Factor of Safety
	PNUH4248	42" & 48"	1800 LB.	7200 Ft.-Lb.	ANSI A10.14 (1 person) OSHA 1910.66 (1 person)	1 Person (350 LBS. / 159 KG Maximum Weight) with better than a 5:1 Factor of Safety

\* Proof Load is defined as the load attained on the structure and sustained by the structure for a period of 2 minutes with no visible signs of structural failure.

\*\* Compliance is dependent upon usage of product within manufacturer's guidelines and in conjunction with only approved PELSUE brand equipment and sub-components

\*\*\* Ratings are arrived at by PELSUE engineering taking into account test data for each structure, applicable and relevant governing standards, and overall good sense. Ultimately, published ratings should be used as a reference allowing the end user to arrive at a comfortable Factor of Safety based upon usage conditions and experience.



**T.A. Pelsue Company**

2500 S. Tejon St.

Englewood, CO 80110

Ph: 1-800-525-8460, (303) 936-7432

Fax: (303)934-5581

Web: [www.pelsue.com](http://www.pelsue.com) E-mail: [sales@pelsue.com](mailto:sales@pelsue.com)